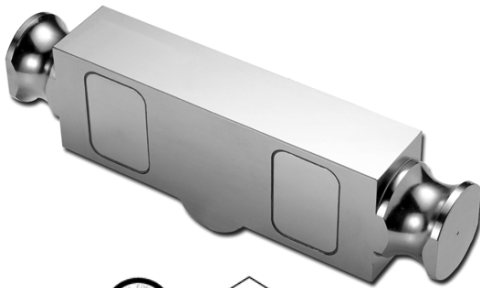


## Double-Ended Link Shear Beam



### FEATURES

- Capacities 25K-125Klb
- Center-mounted with double-linked shear beam design
- Free of horizontal movement
- Insensitive to side load
- Electroless nickel plated alloy tool steel
- NTEP Class III L 10000 for whole series
- Surge protection optional for 60Klb

### OPTIONAL FEATURE

- FM approval available

### DESCRIPTION

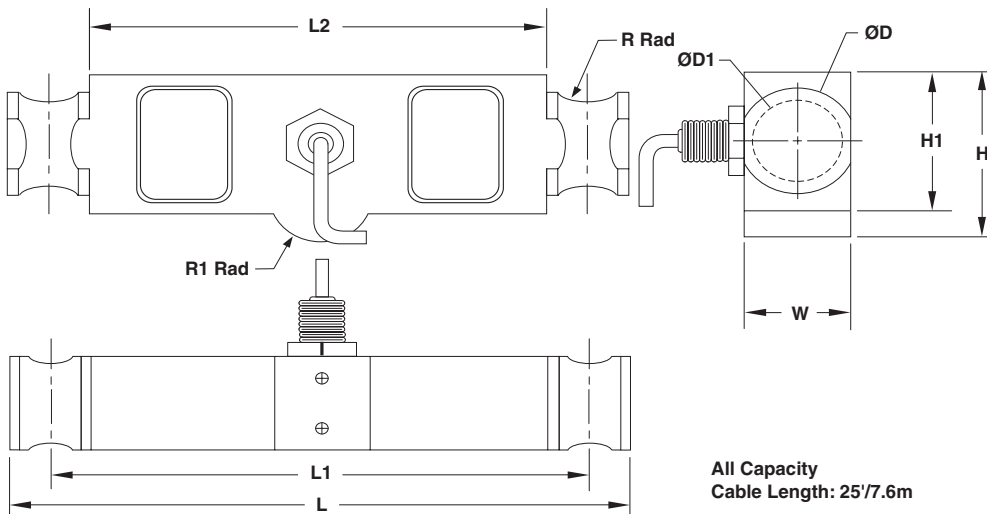
DLB is designed to be center-mounted with double-linked loading. This design provides free movement in all horizontal directions virtually eliminating binding or friction points. The Shear Beam design gives excellent performance for high capacity loading

DLB is constructed of alloy steel and fully potted sealed with special chemical compounds to IP67 providing excellent protection against moisture and humidity.

### APPLICATIONS

- Truck/rail scales
- Silo/hopper/tank weighing
- Fork-lift scales

### OUTLINE DIMENSIONS



#### Wiring diagram

- + Excitation Red
- Excitation Black
- + Signal Green
- Signal White

CAPACITY		L	L1	L2	W	H	H1	D	D1	R	R1
25K/40Klb	mm	209.6	184.2	158.8	49.3	75.5	62.0	50.8	41.4	12.7	12.7
	(inch)	8.25	7.25	6.25	1.94	2.97	2.44	2.00	1.63	0.50	0.50
50K/60K/75Klb	mm	292.1	254.0	215.9	49.3	88.2	74.7	55.9	43.2	19.1	25.4
	(inch)	11.50	10.00	8.50	1.94	3.47	2.94	2.20	1.70	0.75	1.00
100K/125Klb	mm	368.3	317.5	266.7	73.7	118.9	98.0	81.3	62.0	25.4	38.1
	(inch)	14.50	12.50	10.5	2.90	4.68	3.86	3.20	2.44	1.00	1.50

## SPECIFICATIONS

PARAMETER	VALUE		UNIT
	NTEP III L	Non-Approved	
NTEP/OIML Accuracy class	10000 multiple		
Maximum no. of intervals (n)	14000	5000	Maximum available
$Y = E_{max}/V_{min}$	25K, 40K, 50K, 60K, 75K, 100K, 125K		lbs
Standard capacities ( $E_{max}$ )	3.0		mV/V
Rated output-R.O.	0.25		±% of rated output
Rated output tolerance	1		±% of rated output
Zero balance	0.025		±% of rated output
Non linearity	0.025		±% of rated output
Hysteresis	0.02		±% of rated output
Non-repeatability	0.030		±% of rated output
Creep error (20 minutes)	0.030		±% of rated output
Zero return (20 minutes)	0.0010	0.0026	±% of rated output/°C
Temperature effect on min. dead load output	0.0010	0.0015	±% of applied load/°C
Temperature effect on sensitivity	-10 to +40		°C
Compensated temperature range	-20 to +60		°C
Operating temperature range	150		% of R.C.
Safe overload	300		% of R.C.
Ultimate overload	10		Vdc or Vac rms
Excitation, recommended	15		Vdc or Vac rms
Excitation, maximum	770±10		Ohms
Input impedance	700±5		Ohms
Output impedance	>5000		Mega-Ohms
Insulation resistance	Nickel plated alloy steel		
Construction	IP67		
Environmental protection			

All specifications listed subject to change without notice.

### FM Approval

Intrinsically Safe: Class I, II, III; Div. 1 Groups A-G

Non-Incendive: Class I; Div. 2 Groups A-D

## Disclaimer

All product specifications and data are subject to change without notice.

Vishay Precision Group, Inc., its affiliates, agents, and employees, and all persons acting on its or their behalf (collectively, "Vishay Precision Group"), disclaim any and all liability for any errors, inaccuracies or incompleteness contained herein or in any other disclosure relating to any product.

Vishay Precision Group disclaims any and all liability arising out of the use or application of any product described herein or of any information provided herein to the maximum extent permitted by law. The product specifications do not expand or otherwise modify Vishay Precision Group's terms and conditions of purchase, including but not limited to the warranty expressed therein, which apply to these products.

No license, express or implied, by estoppel or otherwise, to any intellectual property rights is granted by this document or by any conduct of Vishay Precision Group.

The products shown herein are not designed for use in medical, life-saving, or life-sustaining applications unless otherwise expressly indicated. Customers using or selling Vishay Precision Group products not expressly indicated for use in such applications do so entirely at their own risk and agree to fully indemnify Vishay Precision Group for any damages arising or resulting from such use or sale. Please contact authorized Vishay Precision Group personnel to obtain written terms and conditions regarding products designed for such applications.

Product names and markings noted herein may be trademarks of their respective owners.